

User's Manual

New iPad Protection Case with detachable Bluetooth keyboard



Product number: SI54072



Thank you for purchasing our New iPad Protection Case with detachable Bluetooth-Keyboards

We hold several brands to produce and distribute our products: **LEICKE** (power adapters, batteries), **KanaaN** (adapters/converters, charging cables etc.), **Sharon** (iPad cases with keyboard, fans etc.), **Hebron** (protective cases, docking stations, screen protectors etc.) and **Manna** (notebook cases).

We continuously work on the further development of our products, our customer support and innovations. Our products have a long service life, are eco-friendly and high performing. Furthermore, every day we do our very best to satisfy you as our customer.

That is why you, no matter if private or business customer, are in the focus of our company's efforts. We take your reviews and proposals seriously and evaluate them continuously. That way, we get to know you and your demands on our products and services better and thus allow for positive enhancements.

To discover more about LEICKE products, or if you have any questions about this product, visit our website www.leicke.com (production & wholesale) or www.leicke-distributor.de (distribution) and feel free to contact us.



PACKAGE CONTENTS

Before attempting to use this device, please check the packaging and make sure the following items are contained in the package:

Number of Pieces	Name	Note
1	PU Leather Case	with detachable keyboard
1	USB Charging Cable	-
1	user manual	-

PRODUCT FEATURES

- Detachable wireless Bluetooth 2.0 keyboard
- Stylish PU leather protective case designed for New iPad
- iPad display stand for easy viewing
- Built-in rechargeable lithium battery (lasts for approx. 45 h per charge)
- Special home screen button for one touch access to a variety of applications
- Light weight, quiet keystrokes, water and dust proof
- Energy saving keyboard sleep mode

KEYBOARD SPECIFICATION

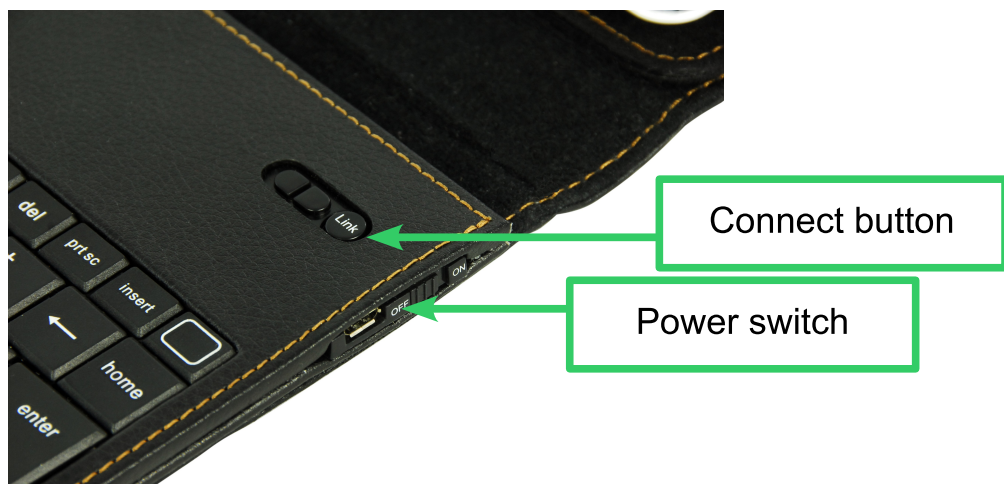
Interface	Bluetooth 2.0
Operating distance	up to 10 m
Modulation system	GFSK
Operating voltage	3,0-5,0 V
Working current	< 5,0 mA
Stand-by current	2,5 mA

Shanon

Sleeping current	< 200 μ A
Charging current	\geq 100 mA
Stand-by time	60 days
Charging tme	4-5 h
Lithium battery capacity	450 mA
Uninterrupted working time	40 h
Lithium battery life	3 years
Lithium battery dimensions	50 x 22 x 48 mm
Key strength	80 g \pm 10 g
Operating tempertature	-10°C - +55°C

BLUETOOTH KEYBOARD PAIRING

- Step 1:** Turn on power switch. The power and bluetooth indicator light will be illuminated for 5 seconds and then go off.
- Step 2:** Press the connect button. Bluetooth indicator light will blink and power indicator will be on. The keyboard is now ready for connection to New iPad.

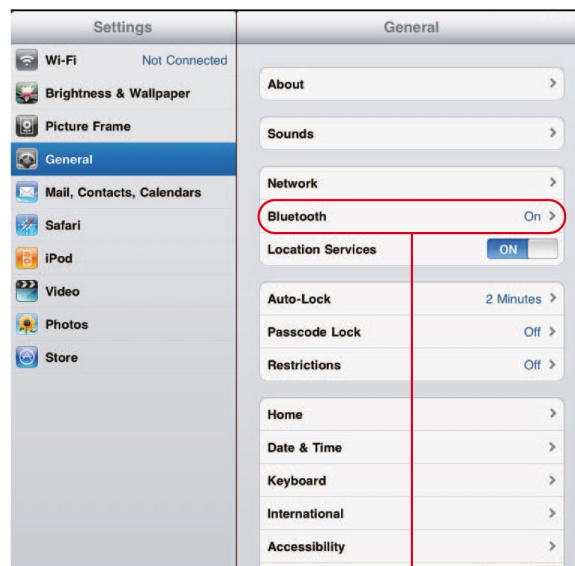


Sharon

Step 3: Turn on and unlock iPad. Click on the iPad's [setting] icon.



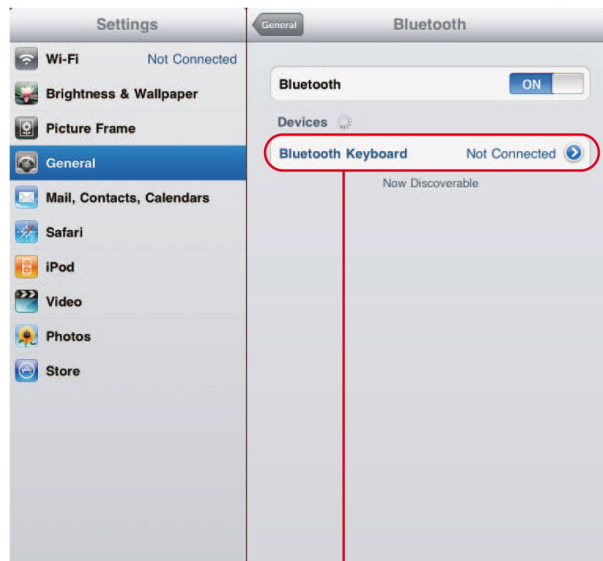
Step 4: Select item [general] on settings menu to access [bluetooth] settings. Click on [bluetooth] to turn on connection. iPad will search automatically for a bluetooth-enabled device.



Click to turn on Bluetooth setting

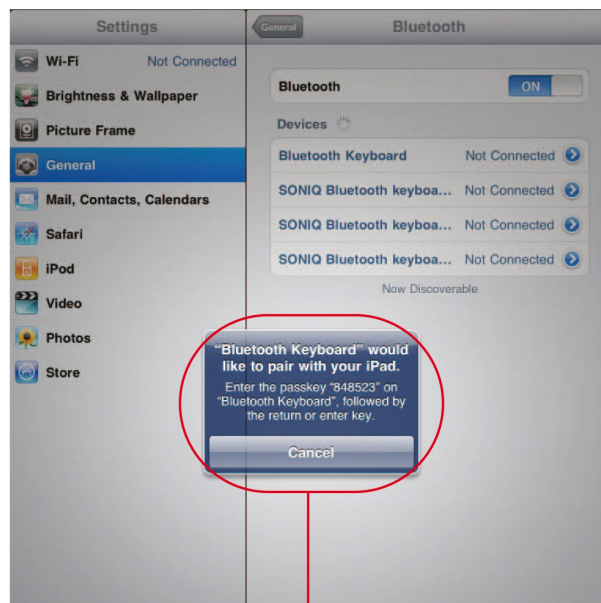
Sharon

Step 5: When wireless keyboard is found click on device to connect.



Klicken Sie auf „Bluetooth Tastatur“

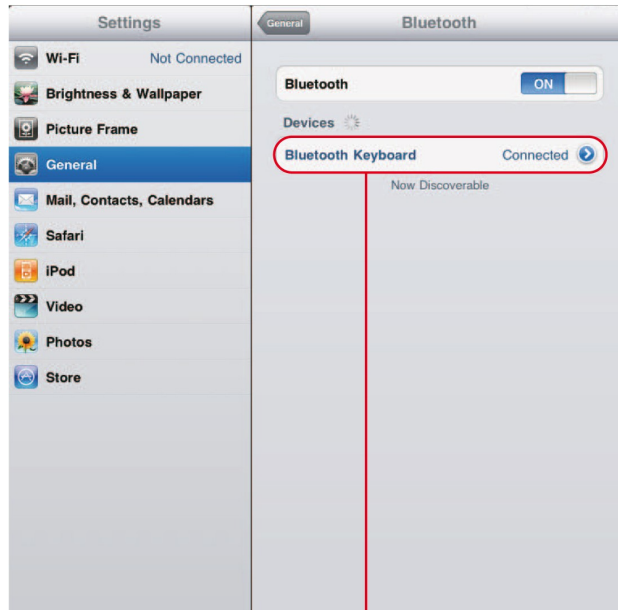
Step 6: Enter password code as displayed on screen.



Enter password code using the wireless keyboard.

Sharon

Step 7: Wireless keyboard connected successfully. [power] indicator light stays on until keyboard is switched off.



Keyboard connected successfully

Note: The wireless keyboard can be connected to iPhone 3/3GS/4G/4S and iPod Touch that have installed iOS 4.0 or later. For other bluetooth enabled devices, please verify bluetooth standard & compatibility before attempting to connect to keyboard.

CHARGING

When the battery is low, the power indicator light starts blinking and the keyboard needs to be recharged.

- Step 1: Connect USB-B of the USB power cable to the keyboard's charging interface.
- Step 2: Connect USB-A to power adapter or computer's USB interface.
- Step 3: The red charging indicator light will illuminate while the keyboard is charging. Once charging is finished, the indicator light turns off.



ENERGY SAVING SLEEP MODE

The keyboard will enter sleeping mode when being inactive for 15 minutes and power indicator light goes off. To re-activate just press any key and wait 3 seconds. The keyboard will come back on.

SAFETY NOTE

- Keep away from sharp objects.
- Do not place heavy objects onto keyboard.
- Do not microwave.
- Do not pull or distort keyboard.
- Keep away from oil, chemicals or any other organic liquids.

SPECIAL KEYS DESCRIPTION

Long press Fn in combination with F1-F12 and insert keys to default to the shift multimedia keys and mainly use in operation of iPad multimedia.

CLEANING

Clean silicone keyboard with water, alcohol or alcohol based disinfectants.



TROUBLESHOOTING

Please check the connection carefully before turning power on. Make sure, that all interfaces are connected properly.

Trouble description	Possible cause and solution
Unable to connect	<ol style="list-style-type: none">1. Make sure power switch is on.2. Make sure keyboard is within operating distance.3. Make sure battery is charged.4. Make sure iPad bluetooth setting is on.5. Make sure wireless keyboard is connected to iPad.6. Make sure wireless keyboard is paired with iPad.
Unable to charge keyboard	<ol style="list-style-type: none">1. Make sure USB power cable is connected properly to keyboard and power source.2. Make sure wall charger is correctly plugged into power outlet.

Please contact us if you cannot solve the problems with the given information.

iPad, iPad2, New iPad, iPhone, iPod Touch are trademarks of Apple Inc.



FCC Statement

This equipment has been tested and found to comply with the limits for a Class B digital device, pursuant to Part 15 of the FCC Rules.

These limits are designed to provide reasonable protection against harmful interference in a residential installation. This equipment generates, uses and can radiate radio frequency energy and, if not installed and used in accordance with the instructions, may cause harmful interference to radio or TV communications, which can be determined by turning the equipment off and on.

This device complies with Part 15 of the FCC Rules. Operation is subject to the following two conditions:

1. This device may not cause harmful interference and
2. this device must accept any interference received, including interference that may cause undesired operation.

FCC Caution: Any change or modifications not expressly approved by the party responsible for compliance could void the user's right to operate the equipment.

IMPORTANT NOTE:

FCC Radiation Exposure Statement:

1. This equipment complies with FCC radiation exposure limits set forth for an uncontrolled environment. End users must follow the specific operating instructions for satisfying RF exposure compliance.
2. This transmitter must not be co-located or operated in conjunction with any other antenna or transmitter.

CONTACT

If you have any questions, please feel free to contact us.

PRODUCTION & WHOLESALE

LEICKE GmbH
Dohnanyistr. 28
04103 Leipzig
Germany

Web: www.leicke.com
Mail: info@leicke.com

DISTRIBUTION

LEICKE Distributor (LEICKE GmbH)
Dohnanyistr. 28
04103 Leipzig
Germany

Web: www.leicke-distributor.de
Mail: info@leicke-distributor.de

